

# Übersicht Farben

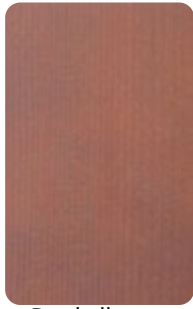


## Holz Oberfläche - Holzart Fichte

Die hier dargestellten Farben und Strukturen können vom Original abweichen.



Farblos



Dunkelbraun



Gelbbraun



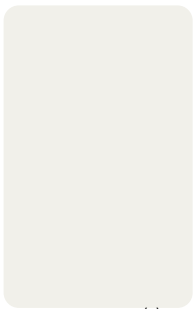
Hellbraun



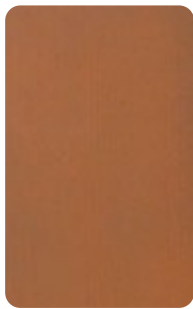
Hellgrau



Ockerbraun



RAL 9016 <sup>(1)</sup>  
Verkehrsweiß



Rotbraun



Weiß lasiert



Hellgrau lasiert



RAL Farben

## Holz Oberfläche - Holzart Lärche



Farblos



Dunkelbraun



Gelbbraun



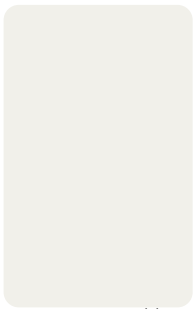
Geölt



Hellbraun



Ockerbraun



RAL 9016 <sup>(1)</sup>  
Verkehrsweiß



Rotbraun



Weiß lasiert



RAL Farben

<sup>(1)</sup> Standard. Weitere Farben auf Anfrage und aufpreispflichtig

# Übersicht Farben



## Holz Oberfläche - Holzart Eiche

Die hier dargestellten Farben und Strukturen können vom Original abweichen.



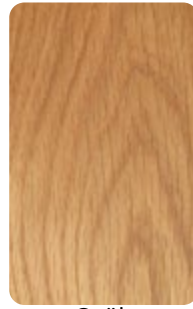
Farblos



Dunkelbraun



Gelbbraun



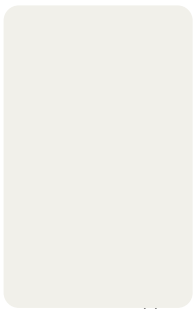
Geölt



Hellbraun



Ockerbraun



RAL 9016<sup>(1)</sup>  
Verkehrsweiß



Rotbraun

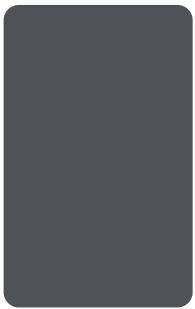


Weiß lasiert

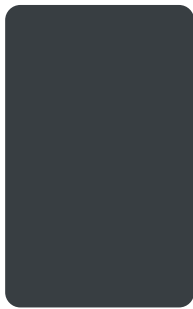


RAL Farben

## Kunststoff Oberfläche - Acryl



RAL 7015  
Schiefergrau



RAL 7016  
Anthrazitgrau



RAL 7039  
Quarzgrau



RAL 7040  
Fenstergrau



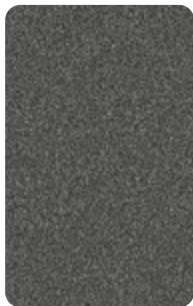
RAL 8014  
Sepiabraun



RAL 9005  
Tiefschwarz



Silber  
ähnlich RAL 9007  
Graualuminium



DB 703

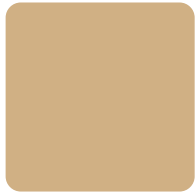
<sup>(1)</sup> Standard. Weitere Farben auf Anfrage und aufpreispflichtig

# Übersicht Farben



## Aluschale - Standard

Jede RAL oder NCS Farbe auf Sonderwunsch gegen Aufpreis lieferbar. Die hier dargestellten Farben und Strukturen können vom Original abweichen.



RAL 1001  
Beige



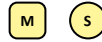
RAL 1013  
Perlweiß



RAL 1015  
Hellelfenbein



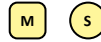
RAL 1019  
Graubeige



RAL 1034  
Pastellgelb



RAL 5000  
Violettblau



RAL 5002  
Ultramarinblau



RAL 5005  
Signalblau



RAL 5007  
Brillantblau



RAL 5008  
Graublau



RAL 5010  
Enzianblau



RAL 5015  
Himmelblau



RAL 5023  
Fernblau



RAL 5024  
Pastellblau



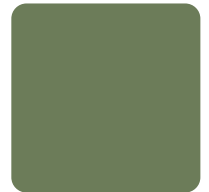
RAL 6002  
Laubgrün



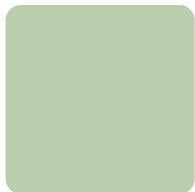
RAL 6005  
Moosgrün



RAL 6009  
Tannengrün



RAL 6011  
Resedagrün



RAL 6019  
Weißgrün



RAL 6021  
Blaßgrün



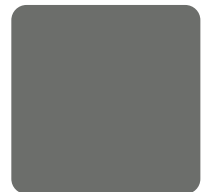
RAL 6029  
Minzgrün



RAL 7001  
Silbergrau



RAL 7004  
Signalgrau



RAL 7005  
Mausgrau



RAL 7006  
Beigegräu



RAL 7010  
Zeltgräu



RAL 7011  
Eisengräu



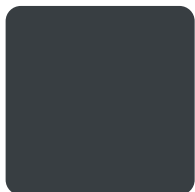
RAL 7012  
Basaltgräu



RAL 7013  
Braungräu



RAL 7015  
Schiefergräu



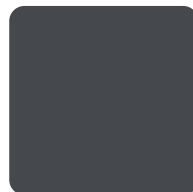
RAL 7016  
Anthrazitgräu



RAL 7021  
Schwarzgräu



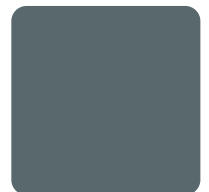
RAL 7022  
Umbragräu



RAL 7024  
Graphitgräu



RAL 7030  
Steingräu



RAL 7031  
Blaugräu

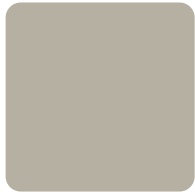


# Übersicht Farben



## Aluschale - Standard

Jede RAL oder NCS Farbe auf Sonderwunsch gegen Aufpreis lieferbar. Die hier dargestellten Farben und Strukturen können vom Original abweichen.



RAL 7032  
Kieselgrau



RAL 7035  
Lichtgrau



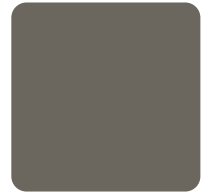
RAL 7036  
Platingrau



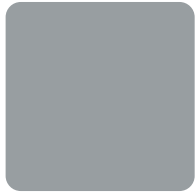
RAL 7037  
Staubgrau



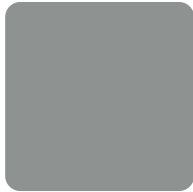
RAL 7038  
Achatgrau



RAL 7039  
Quarzgrau



RAL 7040  
Fenstergrau



RAL 7042  
Verkehrsgrau A



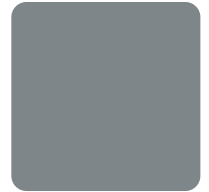
RAL 7043  
Verkehrsgrau B



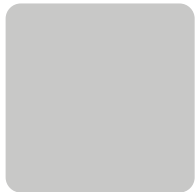
RAL 7044  
Seidengrau



RAL 7045  
Telegrau 1



RAL 7046  
Telegrau 2



RAL 7047  
Telegrau 4



RAL 8001  
Ockerbraun



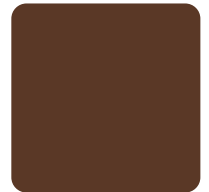
RAL 8003  
Lehmbraun



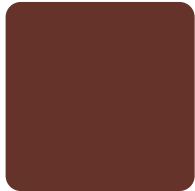
RAL 8004  
Kupferbraun



RAL 8007  
Rehbraun



RAL 8011  
Nußbraun



RAL 8012  
Rotbraun



RAL 8014  
Sepiabraun



RAL 8015  
Kastanienbraun



RAL 8016  
Mahagonibraun



RAL 8017  
Schokoladenbraun



RAL 8019  
Graubraun



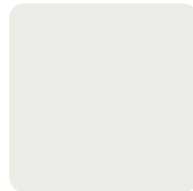
RAL 8022  
Schwarzbraun



RAL 9001  
Cremeweiß



RAL 9002  
Grauweiß



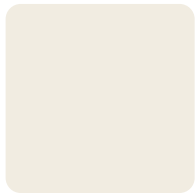
RAL 9003  
Signalweiß



RAL 9004  
Signalschwarz



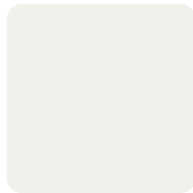
RAL 9005  
Tiefschwarz



RAL 9010  
Reinweiß



RAL 9011  
Graphitschwarz



RAL 9016  
Verkehrsweiß



RAL 9017  
Verkehrsschwarz



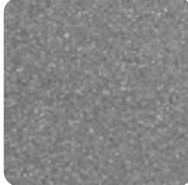
























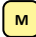





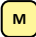





















# Übersicht Farben




## Aluschale - Premium (aufpreispflichtig)

Jede RAL oder NCS Farbe auf Sonderwunsch gegen Aufpreis lieferbar. Die hier dargestellten Farben und Strukturen können vom Original abweichen.

					
C 33 Mittelbronze	C 34 Dunkelbronze	DB 701	DB 703	RAL 1032 Ginstergelb	RAL 1035 Perlbeige
		 	 	 	
					
RAL 1036 Perlgold	RAL 2004 Reinorange	RAL 3000 Feuerrot	RAL 3004 Purpurrot	RAL 3005 Weinrot	RAL 3011 Braunrot
	 	  	  	  	 
					
RAL 3020 Verkehrsrot	RAL 8029 Perlkupfer	RAL 9006 Weißaluminium	RAL 9007 Graualuminium	RAL 9022 Perlhellgrau	RAL 9023 Perldunkelgrau
  		  	  		

## Aluschale - Holzdekor

			
Douglas 1 STR	Douglas 2 STR	Kirsche 2 STR	Oregon 3 STR
			

Legende	
	Holzdekor
	Matt
	Matt Metallic
	Matt Metallic-Struktur
	Matt Struktur
	Seidenglänzend
	Seidenglänzend Metallic

### Bemerkungen:

Matt = Standard-Glanzgrad. Weitere Glanzgrade auf Anfrage.

Matt (Glatt): Glanzgrad ca. 20 - 35 nach Gardner ISO 2813 - 60° Messwinkel für Korona- und Triboapplikation.

Seidenglänzend (Glatt): Glanzgrad ca. 70 ± 5 nach Gardner ISO 2813 - 60° Messwinkel für Korona- und Triboapplikation.

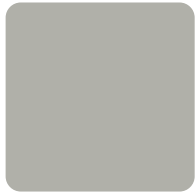
Struktur (Feinstruktur): Größere Verarbeitungstoleranzen, spezifische Reinigungserfordernisse.

# Übersicht Farben



## Raffstore - Lamelle 80R und 92Z

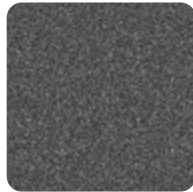
Die hier dargestellten Farben und Strukturen können vom Original abweichen.



Achatgrau  
(RAL 7038)



Anthrazitgrau  
(RAL 7016)



DB 703



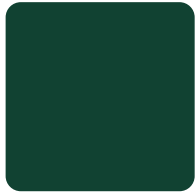
Graualuminium  
(RAL 9007)



Hellbeige  
(NCS S2010-Y30R)



Hellelfenbein  
(RAL 1015)



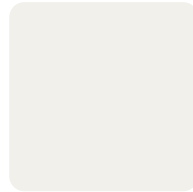
Moosgrün  
(RAL 6005)



Purpurrot  
(RAL 3004)



Telegrau  
(RAL 7047)



Verkehrsweiß  
(RAL 9016)

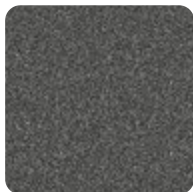


Weißaluminium  
(RAL 9006)

## Raffstore - Lamelle 80D RETROLux



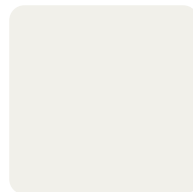
Anthrazitgrau  
(RAL 7016)



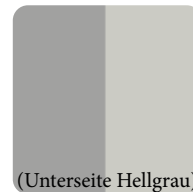
DB 703



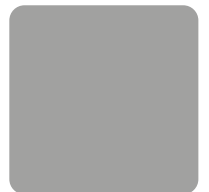
Graualuminium  
(RAL 9007)



Verkehrsweiß  
(RAL 9016)

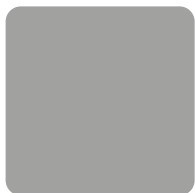


(Unterseite Hellgrau)  
Weißaluminium  
(RAL 9006)



Weißaluminium  
(RAL 9006)

## Rollladen - 37-er Alu Lamelle



Alu naturell  
(ähnl. RAL 9006)



Anthrazitgrau  
(RAL 7016)



Beige



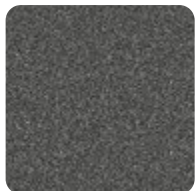
Creme  
(RAL 1015)



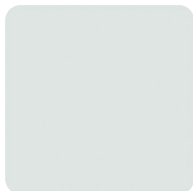
Holz dunkel



Holz hell



DB 703



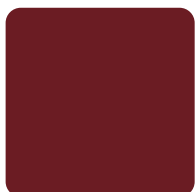
Grau



Graualuminium  
(RAL 9007)



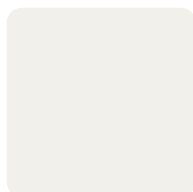
Moosgrün  
(RAL 6005)



Purpurrot  
(RAL 3004)



Terrabraun  
(ähnl. RAL 8028)



Weiß